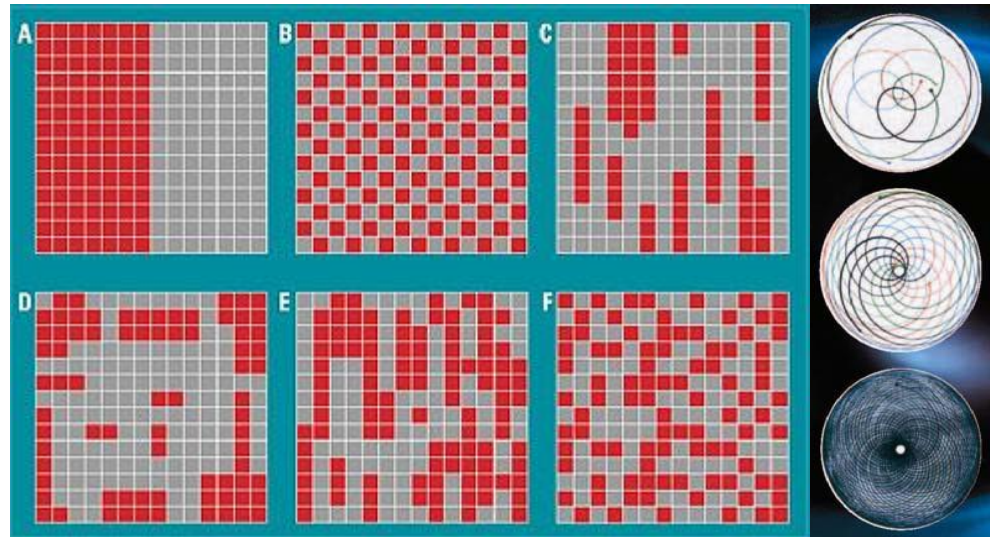


고속 교반기 및 제품기술 소개

What is Mixing....



You can achieve...Homogeneity Mixing

2015년 08월 01일

회사명 : 이오스트(EOST)

대 표 : 최 영 락



❖ High-Speed Mixer → SM-200, SM-2500

Model	SM-200	SM-2500
Mixing Capacity	30g~200g	500g~2.5kg
Mixing Volume	400ml bucket	5l bucket
Speed (RPM)	Max. 2,400RPM	Max. 1,000RPM
Timer	5sec~12hr	5sec~12hr
Dimensions (cm)	45 x 45 x 60	91 x 91 x 105
Weight (kg)	50kg	500kg
Power (V)	220V	220V/380V
Options	Mixing Containers, Holders, Accessories	



SM-200



SM-2500

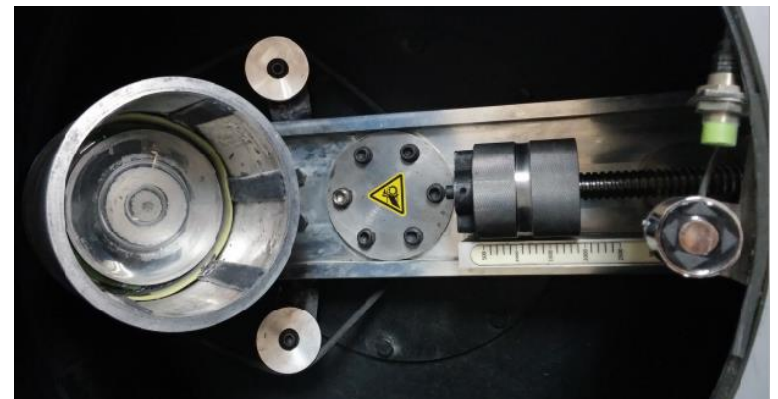
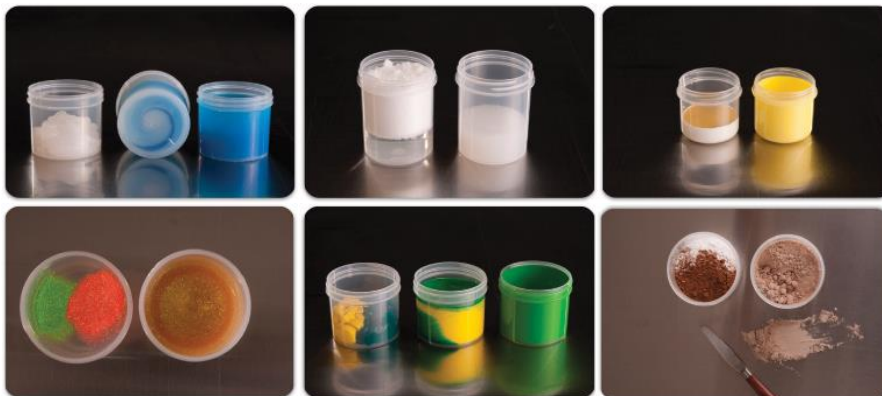
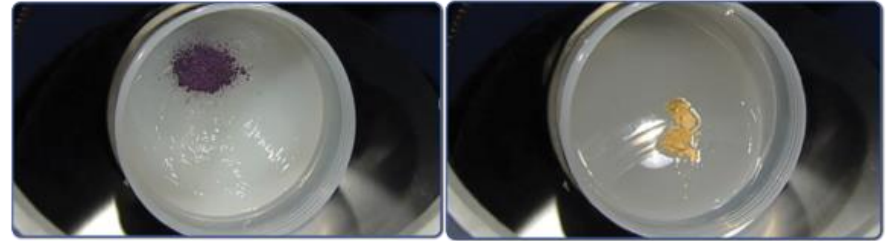
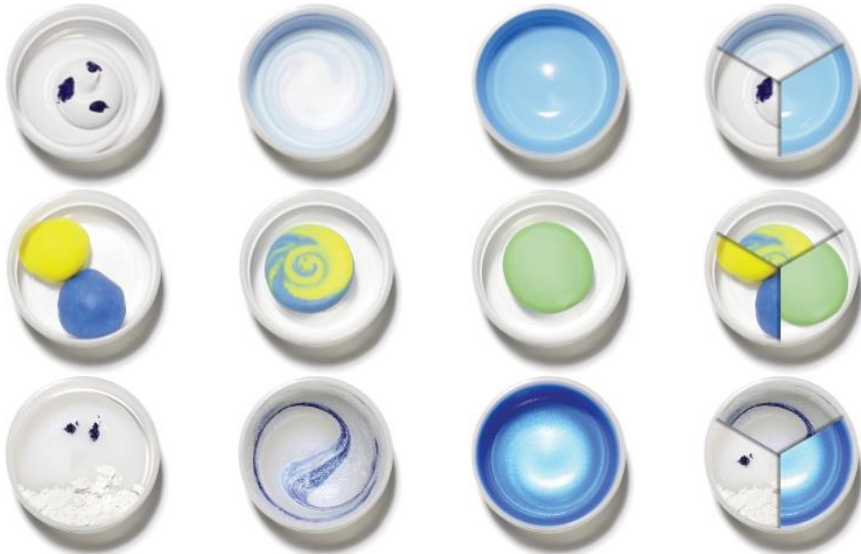
❖ 고속 교반기 (High-Speed Mixer) → Mixing Containers, Holders, Accessories



❖ **Mix / Grind** → Colloids, Fluids, Grease, Resins, Inks, Paints, Silicones, Pastes, Oils, Creams, Gels, Emulsions, Epoxies, Powders, Urethanes, Liquids and more, in any combination!

❖ **Mixing / Dispersing / Grinding** → Saves Time, Improves Sample Quality, Removes Bubbles, Eliminates Cleanup, Reduces Exposure Time to Chemicals

❖ 비중 차이가 큰 물질, 점도가 높은 물질 교반에도 효과가 있음



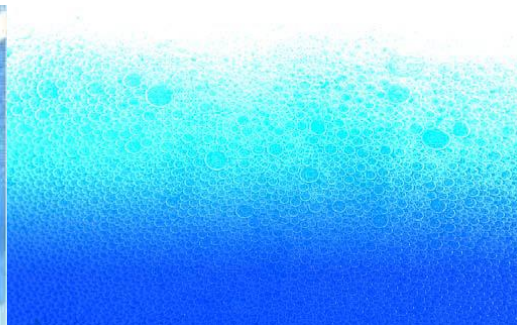
- ❖ No Blades & No Cleanup : 5 l , 400ml Jar에 혼합할 물질을 일정 비율로 담아서 교반
- ❖ High Speed Mixing : 1분 내외에 대부분의 물질을 교반 (1ton/1일, SM-2500 기준)
- ❖ High Pressure Homogenizer : 이론상 890g 중력가속도가 걸리는 고 에너지 교반
- ❖ Bubble Free : 분산 후 기공이 최소화된 상태로 교반
- ❖ 성질과 점성이 다른 종류의 물질을 빠르고 균질하게 교반해 주는 고속 교반기
- ❖ 교반 실험한 종류 : Carbon Paste, 추러스 반죽, 다이아몬드 복합재, 의료용 약물 알루미나 미분화, 화산토 볼밀, 황토타일 원료배합, 형광 실리콘 계면활성재 분산, 업소용 세정제 첨가물 분산 등



개별 Jar 분산



Carbon Paste



Reduce Forming & Air Entrapment

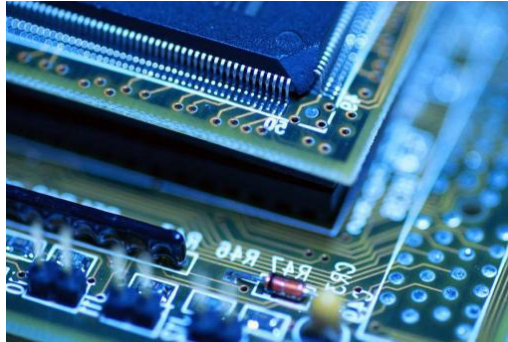


Powder Metallurgy

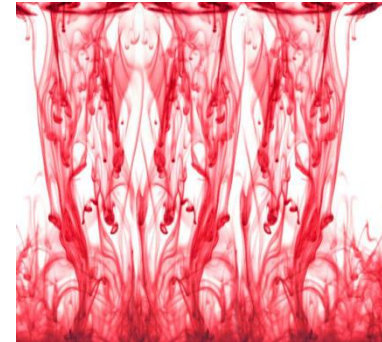
❖ 국내 영업사 블로그 → <http://blog.naver.com/einssys>



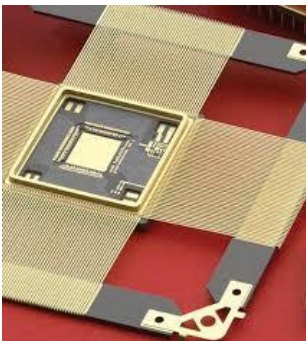
Adhesives & Sealants



Batteries & Electronics



Chemicals



Ceramic, Glass & Metal Powders

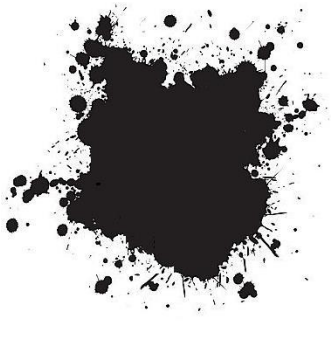


Plastics & Composites



Thermoplastics

❖ 해외 경쟁사 Mixer → <http://www.statemix.com> www.thinkymixer.net



Inks, Paints & Coating



Pharmaceuticals



Food Products

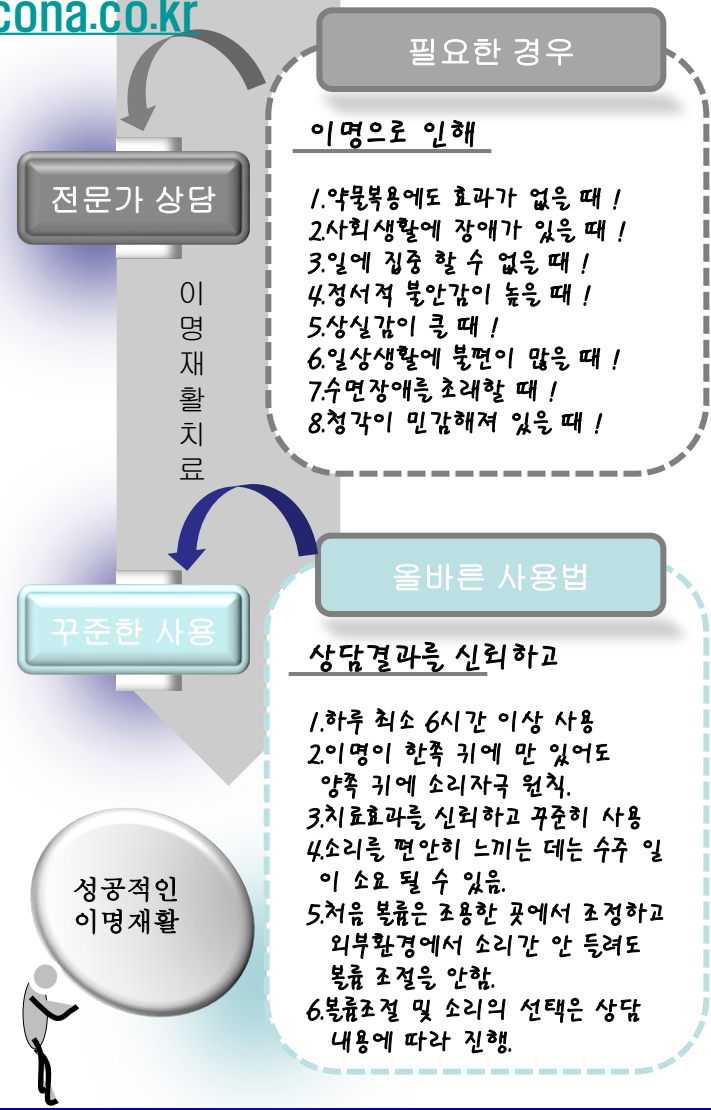
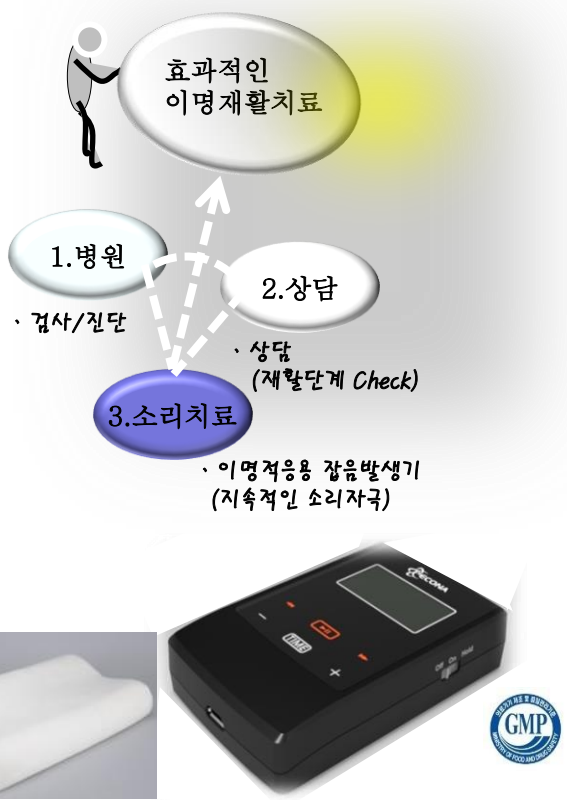


Household & Industrial Cleaners

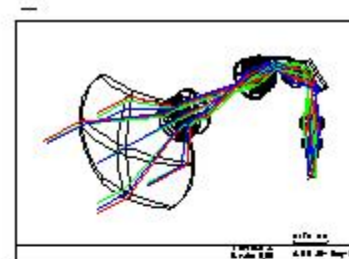
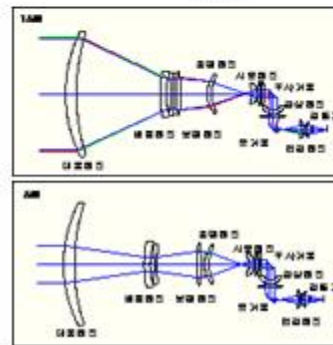
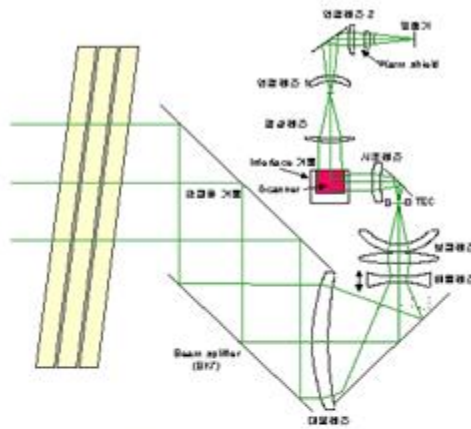
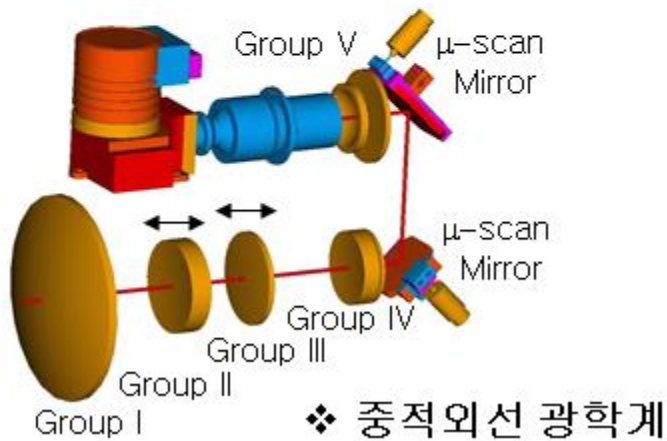
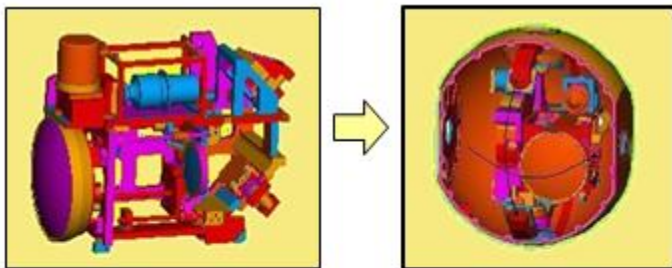


Cosmetics & Personal Care

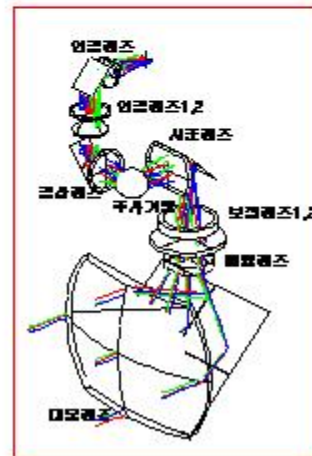
❖ 효과적인 이명재활치료를 위한 3요소 → <http://econa.co.kr>



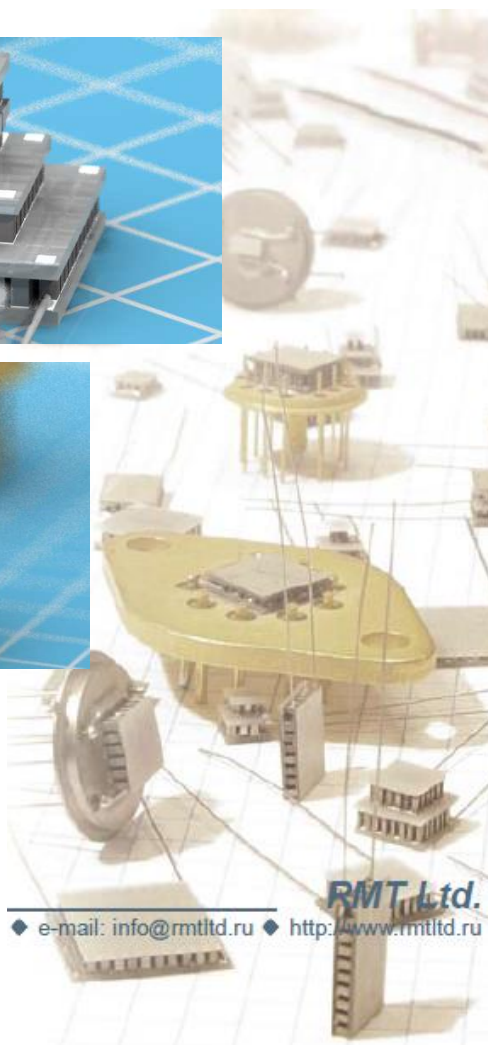
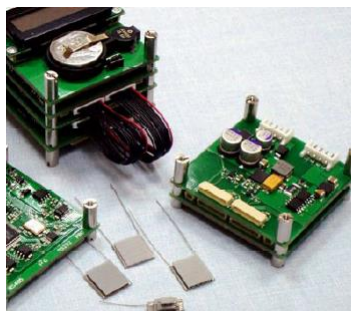
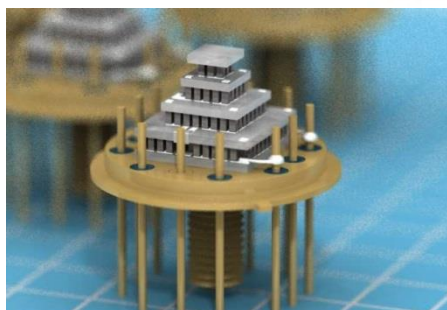
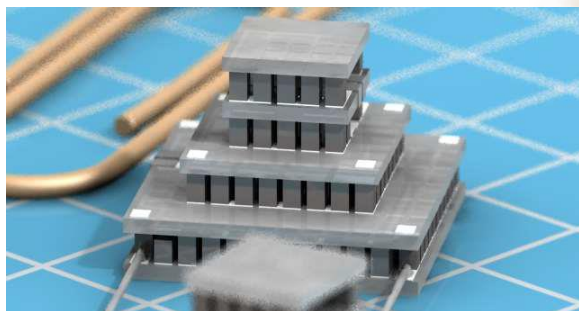
❖ Infrared Optics → ZnSe, Ge, Si etc.



❖ 원적외선 광학계



❖ Thermoelectric Modules, Sub-mounts & Controller → www.rmtltd.ru



- ◆ **Infrared Sensors**
- ◆ **Charge Couple Devices (CCD)**
- ◆ **Focal Plane Arrays (FPA)**
- ◆ **Avalanche Photodiodes (ADP)**
- ◆ **Photomultipliers (PM)**
- ◆ **Semiconductor X-Ray Detectors (Si-PIN, SDD)**
- ◆ **Laser Diodes (LD)**
- ◆ **Superluminescent Diodes (SLD)**
- ◆ **Semiconductor Optical Amplifiers (SOA)**
- ◆ **Diode Pumped Solid State Lasers (DPSS)**
- ◆ **Photodetectors**
- ◆ **Dew Point Sensors**
- ◆ **DNA Temperature Cyclers**
- ◆ **Thermal Reference Sources (Black Bodies)**

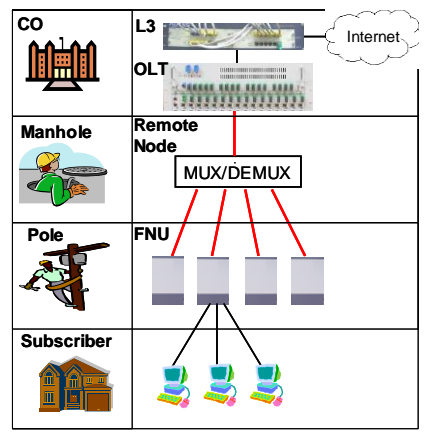
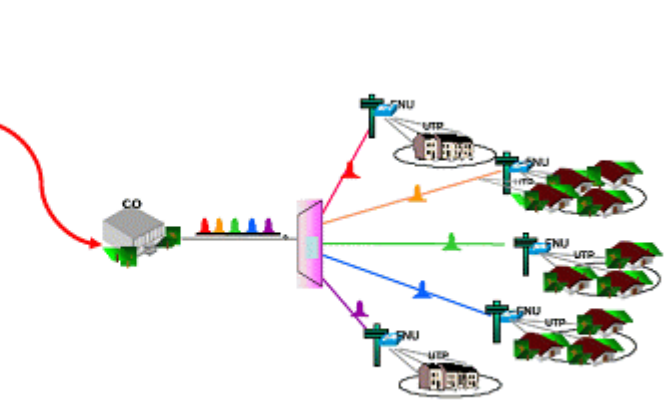
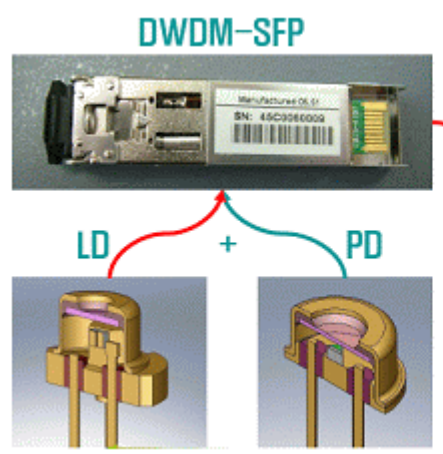
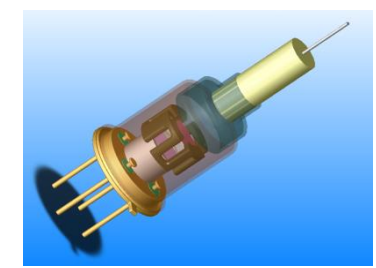
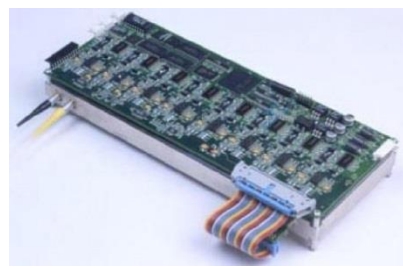
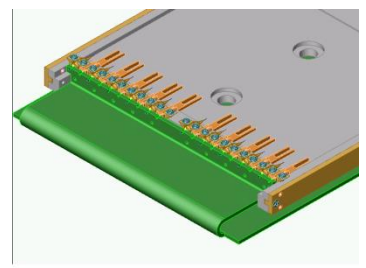
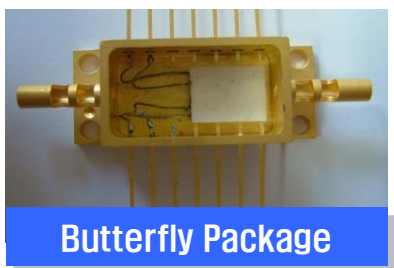
RMT Ltd.
◆ e-mail: info@rmtltd.ru ◆ <http://www.rmtltd.ru>

**Telecom, Photonics, Airspace, Defense
Industrial and Commercial Cooling
Microsystems Applications**

5.1 광통신 기자재_광통신 부품, 모듈 및 장비

I. 판매제품

❖ Optoelectronics Components & Equipment → www.fibernara.co.kr dtt.en.ecplaza.net/



6.1 밸브 피팅 부품_진공/배관용 밸브, 피팅 및 레귤레이터

I. 판매제품

❖ Valve, Fitting, Regulator/MGC, IGS, MFC & Canister → www.tk-fujikin.com

반도체 / FPD

반도체장비산업

조선산업

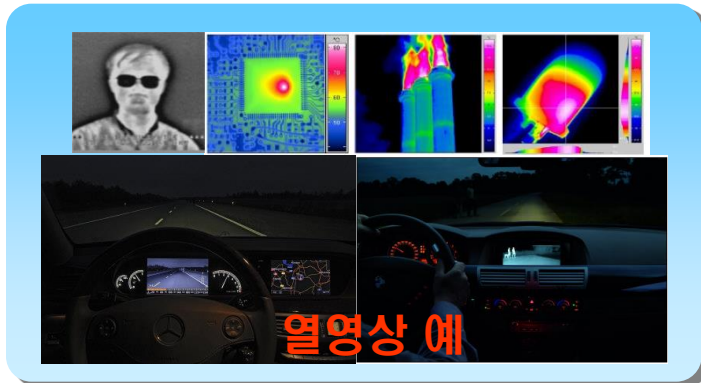
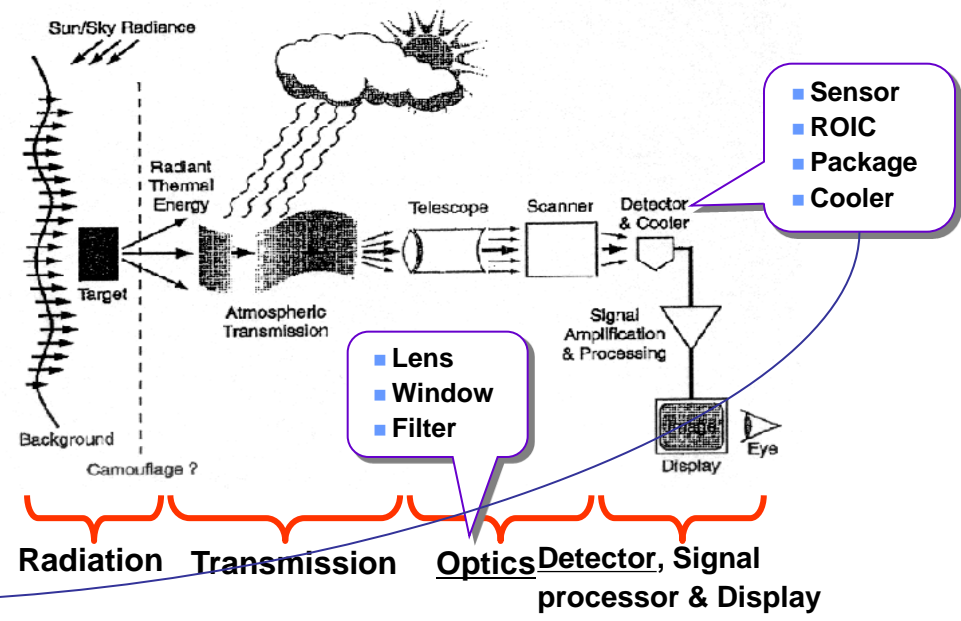
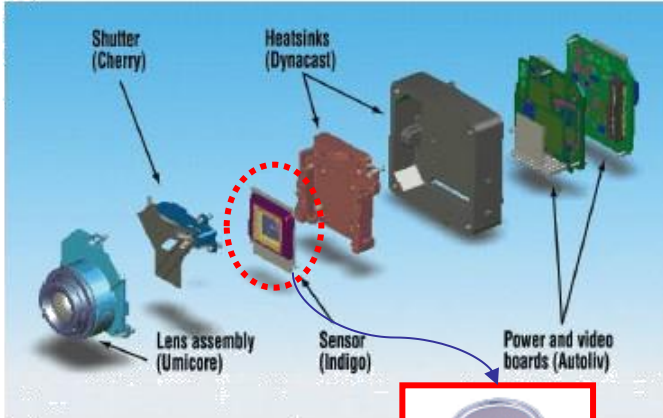
원자력/화력/수력발전소 산업

PLANT / 해양산업분야

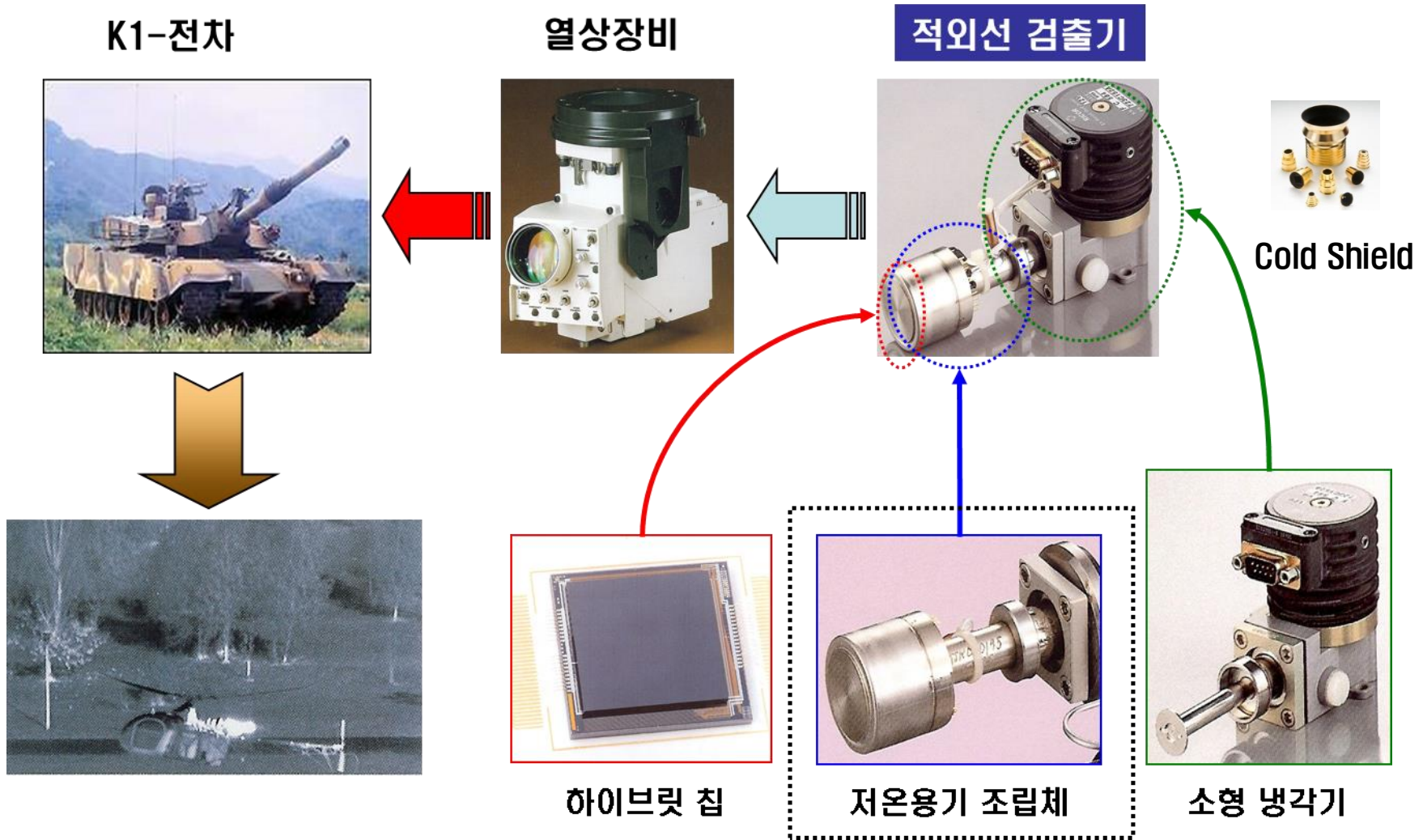
석유화학산업



적외선 카메라



❖ Cryogenic Metal Dewar → 극저온 센서용 진공패키지 공정 서비스



❖ Vacuum Package for Sensor → 진공패키지 공정 서비스



가시영상

열영상

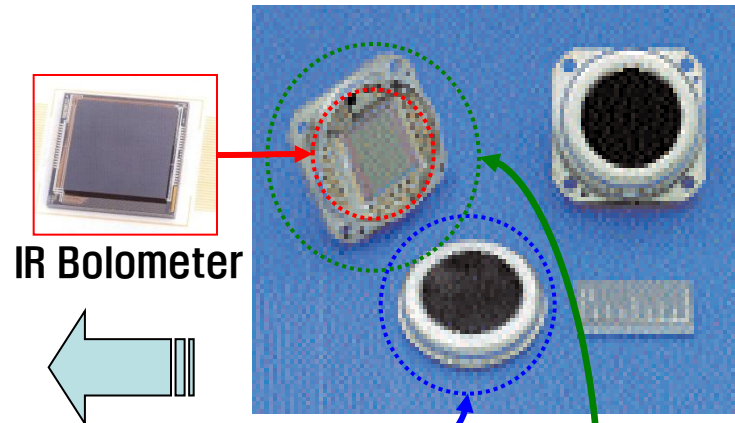


자동차 적용

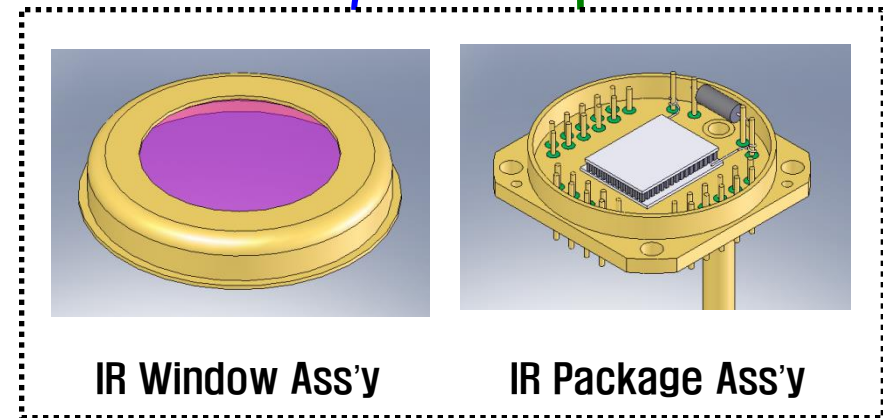


자동차용 열상장비

비냉각적외선 검출기



IR Bolometer



IR Window Ass'y

IR Package Ass'y

❖ Hermetic Package for Sensor → Electro-optic Sensor 패키지 공정 서비스

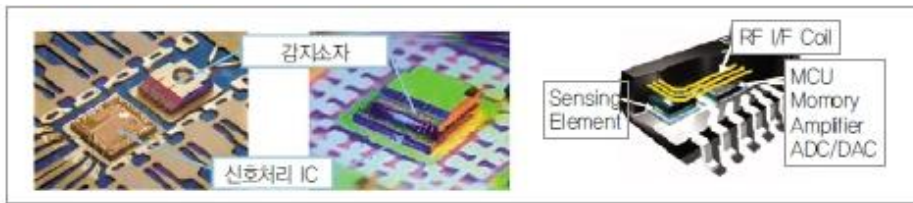


그림 1. 스마트 센서의 구성 및 제품 예

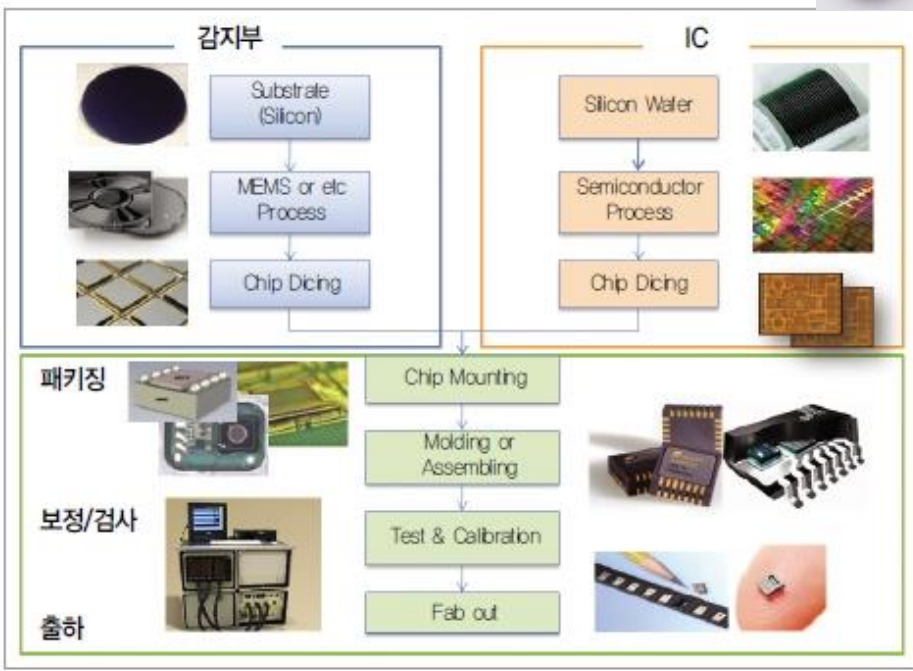
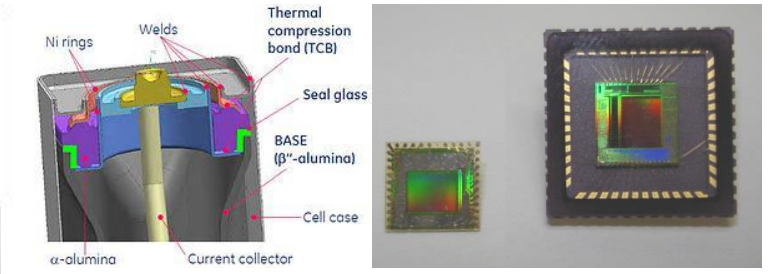
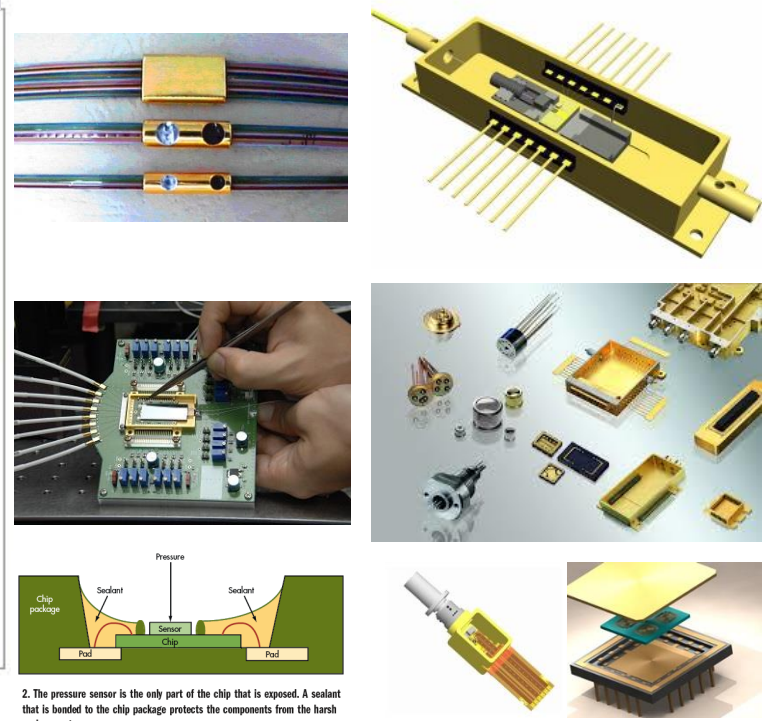


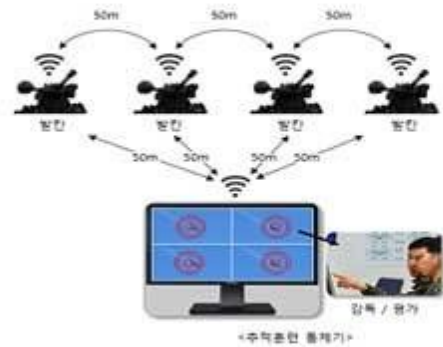
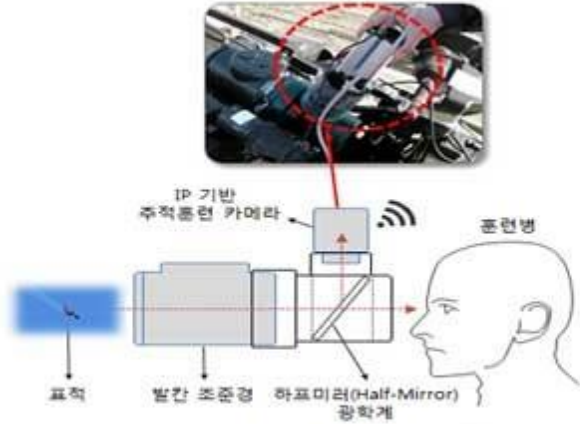
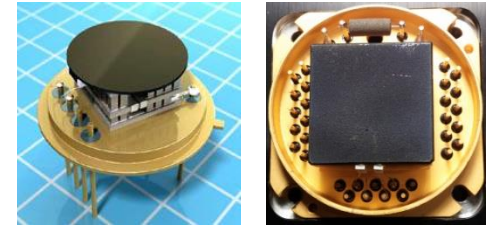
그림 2. 스마트 센서 제조과정



2. The pressure sensor is the only part of the chip that is exposed. A sealant that is bonded to the chip package protects the components from the harsh environment.

❖ Black Body Source → 열상카메라 시험, 보정 및 군용 모의표적

발칸 대공표적 추적훈련 분석기 운용개념도 및 교보재 구성



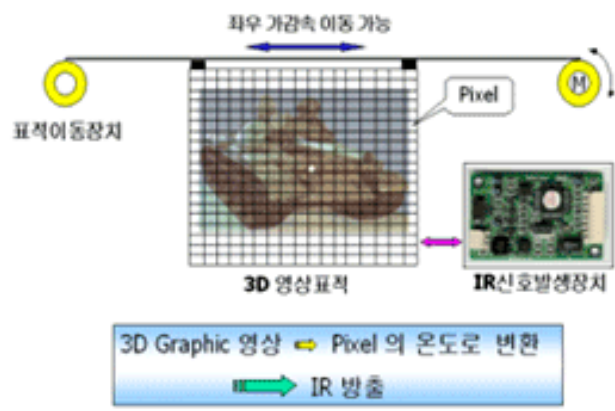
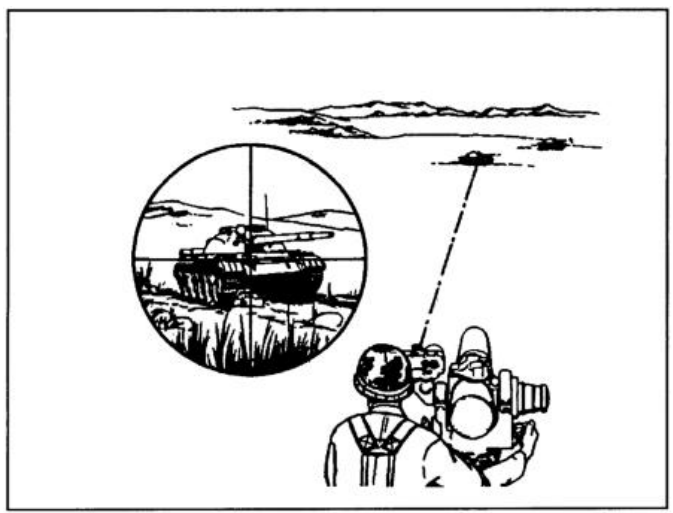
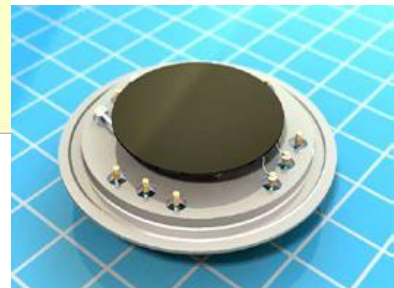
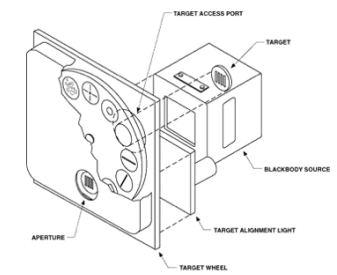
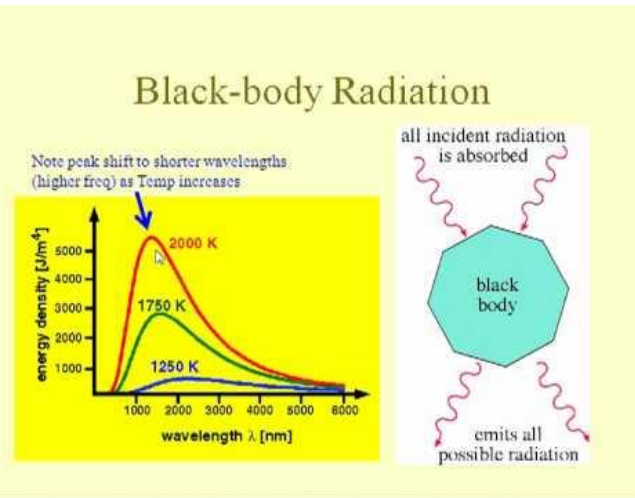
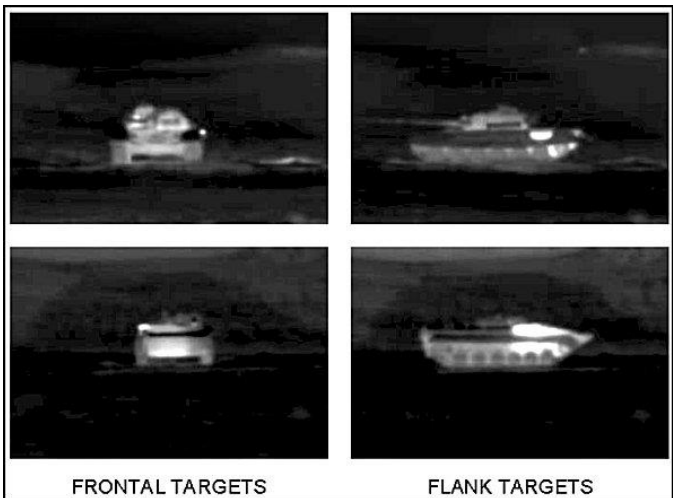
< 발칸 대공표적 추적훈련 카메라 설치 >

< 영상 전송 / 훈련 감독 / 평가 >

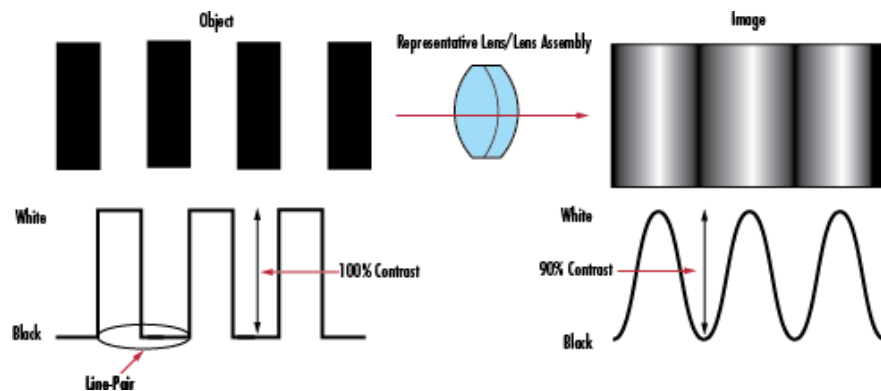
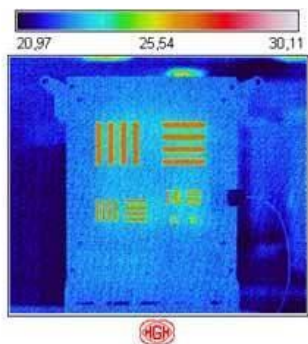
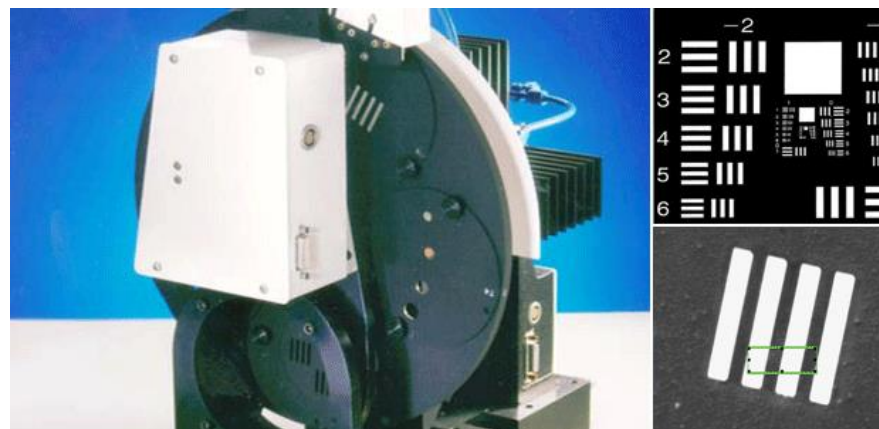
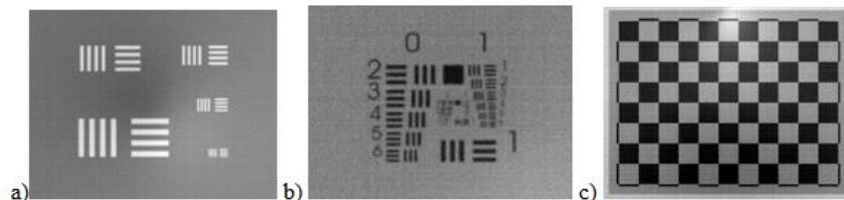
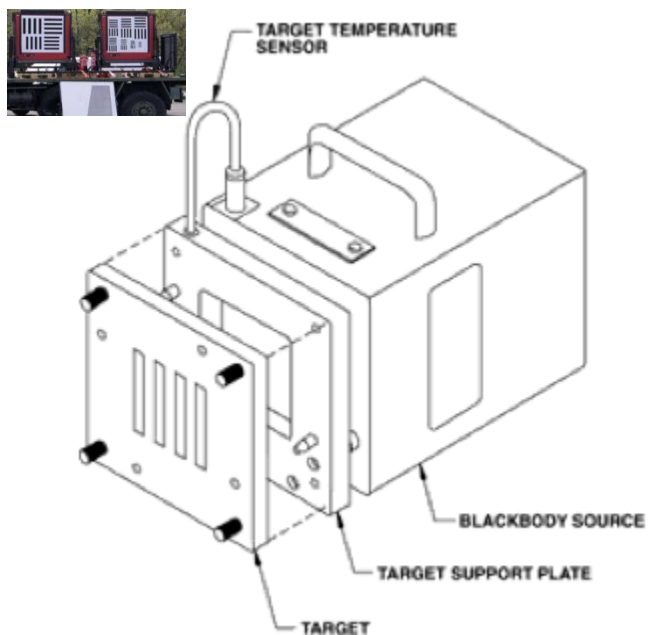
탐지	추적	대기보상	발사	확인
레이다 또는 적외선 탐지	초정밀추적및 요격부위조준	대기불균일보상 →접속능력향상	HEL발사 → 조준점유지	영상확인



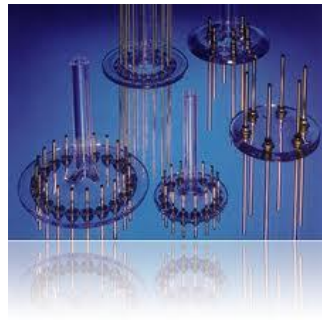
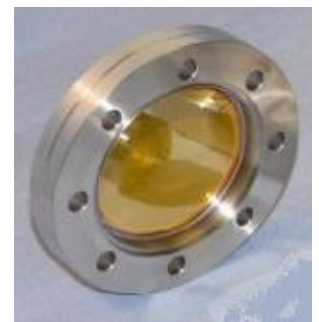
❖ Black Body Source → 열상카메라 시험, 보정 및 군용 모의표적



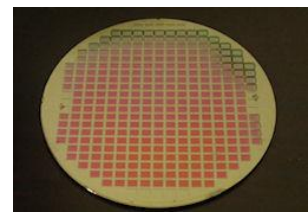
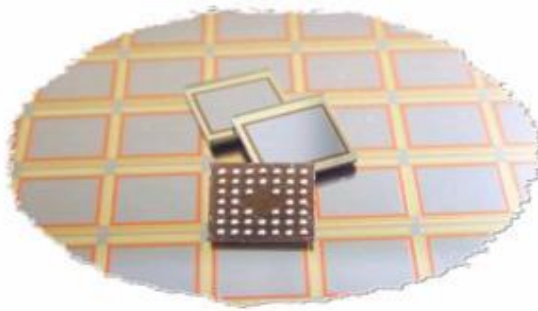
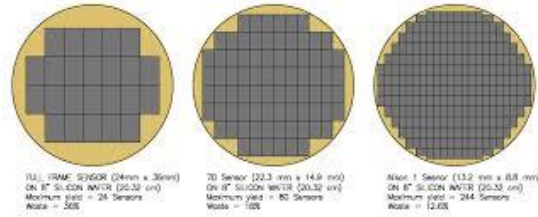
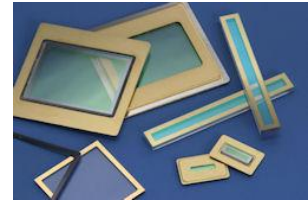
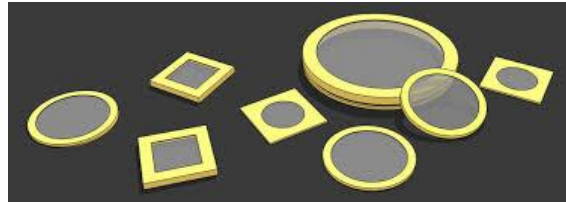
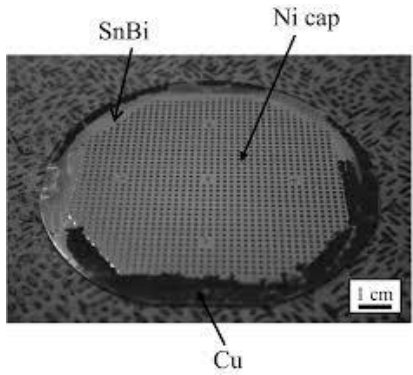
❖ USAF, 4-Bar Target → 열상카메라 해상도, 분해능 평가



❖ Vacuum Feedthrough → 이종재료 접합기술 활용 부품

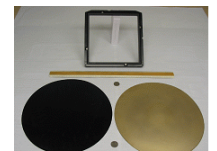
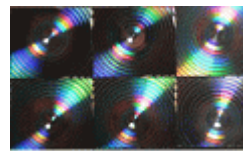
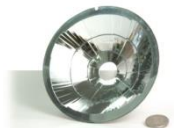
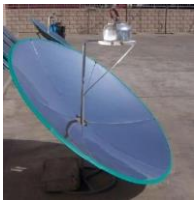
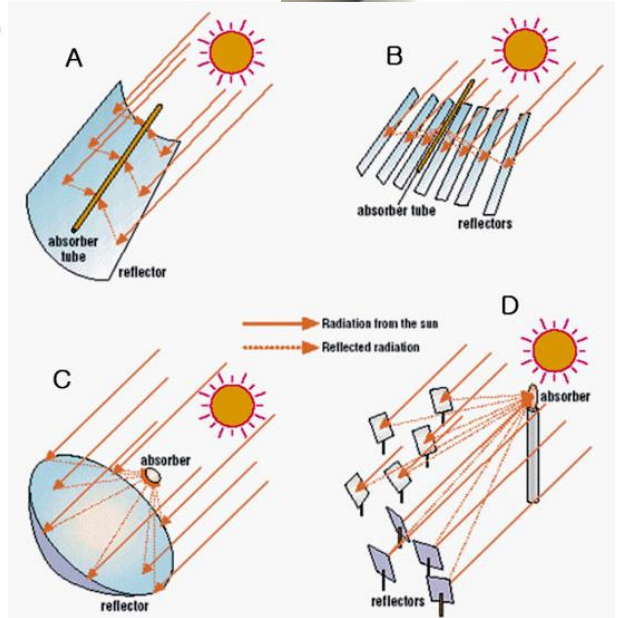
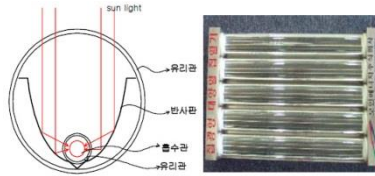


❖ Si/Ge/ZnSe Wafer/Window for Sealing → 적외선 투과 및 밀폐 접합을 위한 메탈라이징



12.1 니켈 두께 도금_전주니켈 반사경

❖ Electro-forming Reflector → 태양열, 서치라이트, 노광기용 반사경



❖ Electroless Plating for Mold → 도광판, 사출 금형용 Ni 무전해도금

미세가공 기술

Feedback에 의한 오차 적응 광학 설계 Pattern 보정으로 BLU 내부 광 분포 제어

- Nano 가공을 이용한 프리즘 도광판 및 LED 백형 금형 기술.
- Nano 가공을 이용한 Hologram 패턴닝 구현 금형 제작 기술.

